

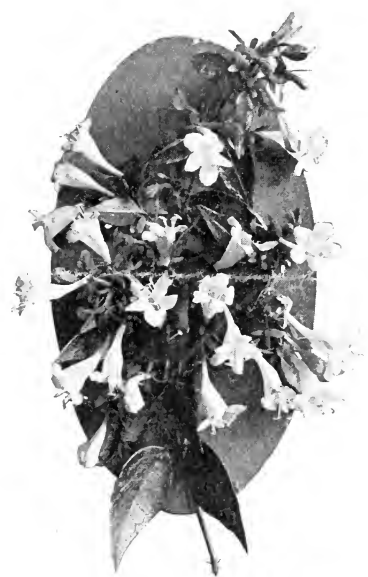
Historic, Archive Document

Do not assume content reflects current scientific knowledge, policies, or practices.

1917 MAR 17
LIBRARY
RECEIVED
U.S. Department of Agriculture.

MOONS'
RARE *and* UNUSUAL
TREES *and* PLANTS

These are just a very few items out of our assortment of over 2000 kinds. We have Hardy Trees and Plants for Every Place and Purpose. If interested, send for our General Catalog and ask our help with your planting problems



Flowers of Abelia, or Bush Arbutus
A Choice Summer-Flowering Shrub
(Described Page 3)

THE WM. H. MOON COMPANY
Nurserymen
MORRISVILLE PENNSYLVANIA

PHILADELPHIA OFFICE
21 SOUTH TWELFTH STREET



THE MOON NURSERY CORP.
WHITE PLAINS, N. Y.

ESTABLISHED 45 YEARS

2000 VARIETIES

500 ACRES



M O O N ' S E V E R G R E E N S

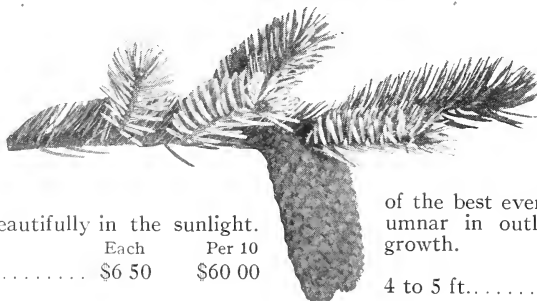
MOONS' RARE and UNUSUAL TREES and PLANTS

WHILE the list of trees and shrubbery available for lawn decoration is very large, there has, through the too frequent use of a relatively few better known varieties, come to be a certain sameness in the lawns and gardens of one's acquaintance. To have a planting with individuality and distinctiveness, include some of the Rare and Unusual varieties offered here. Of course, you will want to include some of these in new plantings—but why not brighten up some of the unsatisfactory places in your existing shrubberies and groupings by the addition of some of these? You should get lots of enjoyment from them. *Five or more plants of any one variety and size at the rate per 10.*

Evergreens

VEITCH'S SILVER FIR

Abies veitchii. Scarcely any other evergreen presents such an attractive effect. The lustrous green needles are silvery white on the under surface and glisten



beautifully in the sunlight.

	Each	Per 10
4 to 5 ft.	\$6 50	\$60 00

CEDAR OF LEBANON

Cedrus libani. Interesting because of its associations with sacred writings and biblical places. Develops into a broad, irregular tree of picturesque appearance. Sufficiently hardy to be successfully grown as far north as New York or Boston when planted in protected places and properly cared for when young.

	Each	Per 10
2 to 2½ ft.	\$3 50	\$32 50

FALSE YEW

Cephalotaxus fortunei. The great beauty of this tree is in the dark rich, green color of the foliage. A tree of medium size which can be used almost the same as an evergreen shrub.

	Each	Per 10
2½ to 3 ft.	\$4 00	\$35 00

CYPRESS OR CUPRESSUS

Beautiful, compact growing trees of rather conical outline. Everyone who sees these trees for the first time expresses a fondness for them. The foliage is of an attractive glaucous tint and their neat, erect habit of growth is quite in contrast to other evergreens. The two varieties here listed differ only slightly in their general appearance. They are both suited for southern plantings, but in protected localities are hardy as far north as New York City.

Cupressus lawsoniana; var. *Allumi*.

	Each	Per 10
3 to 4 ft.	\$5 00	\$45 00

Cupressus lawsoniana; var. *Veitchii glauca*.

A trifle more open in its nature of growth.

	Each	Per 10
3 to 4 ft.	\$5 00	\$45 00

BLUE VIRGINIA CEDAR

Juniperus virginiana; var. *Glauca*. Beautiful blue glaucous foliage that is conspicuous at all seasons of the year. One

of the best evergreens of this color. Columnar in outline and of fairly quick growth.

	Each	Per 10
4 to 5 ft.	\$5 00	\$45 00

CONICAL SPRUCE

Picea excelsa; var. *Conica*. Although similar to the common Norway Spruce in many ways, this tree is rather more compact and more conical in outline. Especially desirable where a symmetrical tree of large proportions is wanted.

	Each	Per 10
4 to 5 ft.	\$3 50	\$32 50

JAPANESE SPRUCE

Picea polita. Distinguished by its light green color and by its very rigid needles. It develops into an attractive symmetrical specimen.

	Each	Per 10
2 to 2½ ft.	\$3 50	\$32 50

JAPANESE TABLE PINE

Pinus densiflora; var. *Tanyosho*. This rather dwarf evergreen develops into unusual proportions, usually being much broader than its height. The needles are long and of a light green color. A splendid tree for the Japanese garden, or it can be effectively used wherever a tree of this outline is wanted.

	Each	Per 10
2½ to 3 ft. x 3 to 4 ft.	\$10 00	\$85 00

JAPANESE CYPRESS

Retinospora obtusa; var. *Acuta*. A splendid narrow, upright growing variety. The frond-like arrangement of the leaves is quite distinctive, making it a choice evergreen.

	Each	Per 10
2½ to 3 ft.	\$4 00	\$35 00



M O O N ' S S H R U B S

DWARF JAPANESE YEW

Taxus cuspidata; var. *Brevifolia*. Each year there is an increasing demand for this tree. It combines the beautiful dark green foliage of the Yews and is hardy enough to withstand the cold of our New England winters. It is slow growing, of low spreading nature and usually rather irregular in outline.

	Each	Per 10
1½ to 2 ft.....	\$3 50	\$30 00

AMERICAN YEW

Taxus canadensis. Our native representative of the Yew family. It is a prostrate shrub having attractive dark green foliage. It is one of the few evergreens that can be successfully grown in shady places and promises to be a popular garden plant.

	Each	Per 10
1½ to 1½ ft.....	\$1 50	\$12 50

REID'S ARBORVITÆ

Thuja occidentalis; var. *Reidii*. One of the best upright growing Arborvitaes. Grows more bushy at the base, is really conical in outline and generally quite compact and symmetrical. Very desirable lawn tree.

	Each	Per 10
5 to 6 ft.....	\$5 00	\$45 00

SITKA CYPRESS

Thuyopsis standishii. A beautiful evergreen indigenous to the Pacific coast. Of rather loose open habit of growth and the individual twigs droop gracefully, although the general appearance of the tree is pyramidal in outline.

	Each	Per 10
4 to 5 ft.....	\$6 00	\$55 00

Thuja "Little Gem."

This is the most dwarf-growing evergreen that we offer. An especially choice little tree of compact growth and of rather spreading nature.

8 to 12 inches broad:

	Each	Per 10
	\$1 75	\$13 50

CAROLINA HEMLOCK

Tsuga carolina. A rare tree which is native of the Southern Appalachians, although hardy in the northern states. Similar in nature to the common Hemlock, it presents a far more attractive appearance, and is destined to be one of our best native evergreens for permanent plantings.

	Each	Per 10
4 to 5 ft.....	\$8 00	\$72 50

RED FLOWERING JAPANESE AZALEA

Azalea hinode-giri. An artist once said that red did not harmonize with any other color. Perhaps he was right, but be that as it may, nearly everyone is fond of a red flower. This Azalea is literally covered in the spring with a multitude of bloom and is an especially choice plant that does well in either sunlight or partial shade. We suggest this Azalea's liberal use at the front of Rhododendron plantings in localities south of New York City, where it will be found hardy.



The Dwarf Japanese Yew is one of the best of all Evergreens

1 to 1½ ft., bushy.....	\$2 00	\$16 00
-------------------------	--------	---------

LAVENDER FLOWERING JAPANESE AZALEA

Azalea rosmarinifolia; var. *Narcissiflora*. A remarkable plant with double flowers of a deep lilac or lavender color that appear early in May. The autumn coloring of the foliage is in tones of scarlet. More hardy than the other Japanese Azaleas, which should be a factor in bringing this beautiful plant to the front as a decorative shrub for our lawns.

	Each	Per 10
1½ to 2 ft.....	\$3 50	\$30 00

SCOTCH HEATHER

Calluna vulgaris; var. *Alba*. A very handsome low evergreen shrub that bears a profusion of small pinkish-white flowers in late summer. Well suited for borders of evergreen shrubbery or for covering dry sandy slopes. Prefers a sunny location.

	Each	Per 10
6 to 8 inches..	\$ 50	\$4 00

BUSH ARBUTUS

Abelia rupestris. Although not a new plant by any means, this shrub is just beginning to become recognized as a valuable addition to our gardens. There is an abundance of flowers that appear throughout the entire summer season. They are small, bell-shaped and of a pinkish-white color. The small glossy green leaves are almost evergreen. Plant in groups or masses to get the best effect. Recommended for planting in protected places as far north as New York City. Although quite scarce, we offer this plant at a popular price that is within the reach of all.



Azalea Hinode-giri—a mass of bright red flowers in May. Described above.

Vigorous	Each	Per 10
2-yr. plants .	\$1 00	\$8 00

PROSTRATE COTONEASTER

Cotoneaster horizontalis. A low, prostrate shrub, with small glossy leaves that remain evergreen all year. Has attractive red berries in the autumn. A choice plant for the rockery, or to group on terraces.

	Each	Per 10
1½ to 2 ft.....	\$1 15	\$8 50

SMALL-LEAVED COTONEASTER

Cotoneaster microphylla. An attractive dwarf shrub, suitable for rockery planting, although equally effective for decorating banks and terraces. Small, bright red berries decorate it in the autumn.

	Each	Per 10
1¼ to 1½ ft.....	\$ 75	\$6 00

JAPANESE EUONYMUS

Euonymus japonica. An erect growing shrub with glossy green foliage, and bright green bark. Can be planted in full sunlight or partial shade. In the latitude of New York it is sometimes slightly hurt by the winter, but should be more generally used further south.

	Each	Per 10
1¼ to 1½ ft.....	\$ 75	\$6 00

VARIEGATED JAPANESE EUONYMUS

Euonymus japonica; var. Argentea. The foliage of this variety has silver markings, and is especially valuable for producing color contrasts in a mixed planting of Evergreen Shrubs. Its nature adapts it to southern plantings best, and prefers well-drained soil.

	Each	Per 10
1½ to 2 ft.....	\$1 50	\$12 50

ENGLISH LAUREL

Prunus schipkaensis zabeliana. The assortment of broad-leaved Evergreens which can be grown in the latitude of New York is rather limited, and any new shrub that can be planted here makes a welcome addition to the list. This shrub which adds so much to the beauty of the gardens of England does fairly well in sheltered places south of New York City.

	Each	Per 10
1½ to 2 ft.....	\$2 75	\$25 00

WINTER BERRY

Ilex glabra. A native plant that is just beginning to come into general use. It has oval Evergreen leaves, similar in general appearance to Boxwood. With proper care and an occasional shearing this would be almost as valuable for gardening work as the Boxwood.

	Each	Per 10
1¼ to 1½ ft.....	\$2 65	\$23 00

Deciduous Trees

GLOBE NORWAY MAPLE

Acer platanoides; var. Globosa. The foliage is of the same rich dark green color as the parent type. It is of compact growth and with an occasional shearing produces a symmetrical appearance, making it valuable for formal planting. Much more distinctive than the Catalpa bungeii, which it should supercede where a tree of that type is wanted.

6 to 8 ft. stems.	Each	Per 10
2 to 2½ ft. dia. of hd..	\$4 00	\$35 00

PYRAMIDAL BIRCH

Betula alba; var. fastigiata. A very choice tree when something of this type is desired. The nature of growth is quite similar to the Lombardy Poplar, but it is of far better quality and much more dependable.

	Each	Per 10
8 to 10 ft.....	\$3 00	\$27 50

JAPANESE FLOWERING DOGWOOD

Cornus kousa. A tree of medium size that is quite rare and destined to become very popular after it is known. Its general appearance, as to growth and flowers, is similar to our native Dogwood. Its principal value lies in the fact that its season of bloom is in the month of June or July, and it is a real treat and source of pleasure to have one of these Dogwoods in flower on your lawn at that time.

	Each	Per 10
4 to 5 ft.....	\$2 75	\$22 50



Flowers of Japanese Dogwood

RIVER'S PURPLE BEECH

Fagus sylvatica; var. Riversii. The foliage of this tree is perhaps the darkest and most brilliant of any possessing this coloring. By many people it is pronounced one of the choicest lawn trees for individual planting. It eventually develops into symmetrical outlines, while the color gives a pleasing contrast with the other trees in the landscape.

	Each	Per 10
5 to 6 ft.....	\$2 25	\$20 00

FERN-LEAVED BEECH

Fagus sylvatica; var. Heterophylla. Has distinctive foliage that is deeply and delicately cut. The tree is closely branched and develops into a symmetrical specimen which usually looks best when allowed to retain its lower branches. Presents an effect quite different from other trees and makes an interesting addition to the lawn.

	Each	Per 10
4 to 5 ft.....	\$2 25	\$20 00

PINK FLOWERING HALL'S MAGNOLIA

Magnolia stellata; var. Rosea. In flowering trees there is nothing more popular than the Magnolias. Some varieties are now getting quite common, but this sort is rarely offered. It blooms very early in the spring, and the color of its flowers is a delicate shade of pink. A choice tree suited for either a large or small lawn.

	Each	Per 10
4 to 5 ft.....	\$8 50	\$70 00



Let the lower branches grow on the Fern-leaved Beech, then you get this beautiful effect. Described, page 4.

CORK TREE

Phellodendron sacchalinese. A rare tree introduced from China, producing clusters of black fruit that are retained well into the winter. The attractive compound leaves that give it a tropical appearance possess a pungent aromatic odor which protects the tree from insect attacks.

	Each	Per 10
10 to 12 ft., 1½ to 2 in.....	\$2 00	\$16 00

BOLL'S POPLAR

Populus alba; var. Bolleana. A tree of quick growth, and of narrow conical outlines, similar in appearance to the Lombardy Poplar. It differs principally in the color of the leaves, which are of a silvery white appearance, making it an interesting lawn tree for formal planting, or to accent certain features of a landscape.

	Each	Per 10
12 to 14 ft., 1¾ to 2 in.....	\$2 25	\$17 50
14 to 16 ft., 2 to 2½ in.....	3 50	27 50

PARKMAN'S FLOWERING CRAB APPLE

Pyrus parkmanii. The flowering Crab Apples are among the choicest dwarf flowering trees for lawn decoration, and this variety is one of the most desirable kinds. Its nature of growth is rather irregular, and inclined to be unshapely, especially when young, but it has attractive foliage and bears innumerable quantities of bright, fragrant, rose-colored flowers at the close of April.

	Each	Per 10
5 to 6 ft.....	\$2 00	\$16 50

WILLOW-LEAVED OAK

Quercus phellos. It takes its name from the long narrow leaves which resemble those of the willow and are much in contrast to other trees of this family. Although native throughout the south, it is satisfactory for planting as far north as New York, and does well in moist soils. The branches grow closely, making a compact headed tree of large stature and great beauty.

	Each	Per 10
8 to 10 ft., 1¼ to 1½ in.....	\$2 75	\$25 00

SWAMP WHITE OAK

Quercus bicolor. The White Oaks, although of rather slow growth, are among our most desirable long-lived trees for general lawn planting. This variety thrives in either dry or moist locations, and deserves more general appreciation.

	Each	Per 10
6 to 8 ft.....	\$2 00	\$16 00
8 to 10 ft., 1¼ to 1½ in.....	2 50	20 00

MOSSY CUP OAK

Quercus macrocarpa. Of massive open growth with large heavy leaves, and deeply corrugated bark. The cups of the large acorns are curiously fringed as with gray moss which gives the name to this, one of the noblest of the Oaks.

	Each	Per 10
10 to 12 ft., 1½ to 2 in.....	\$3 00	\$26 00

KADSURA TREE

Cercidiphyllum japonica. Although this small bushy tree has been offered by nurserymen for years, few people as yet have learned of its beauty. It is of medium size, and considered by many to be one of the best introductions from Japan. The leaves have a purplish tinge when they unfold, are green during the summer, and turn bright yellow and partially scarlet in the autumn. Its outline and general appearance give a pleasing contrast to other trees.

	Each	Per 10
8 to 10 ft., 1½ to 2 in.....	\$2 50	\$20 00



A beautiful specimen of the Cork Tree, *Phellodendron sacchalinese*. It will grow in your yard just as well as in China, its native home.

JAPAN PAGODA TREE

Sophora japonica. When young, this tree assumes the proportions of a rather large shrub, but in time develops into a small-sized shade tree. It has dark green compound leaves that are quite attractive. The pea-shaped flowers are not produced until the tree is several years old, and are quite ornamental during the summer months.

	Each	Per 10
5 to 6 ft.....	\$1 50	\$12 50
7 to 8 ft.....	2 50	20 00

OAK-LEAVED MOUNTAIN ASH

Sorbus aucuparia; var. Quercifolia. An upright growing tree of rather pyramidal outline having deeply lobed leaves that resemble the foliage of the Oak. An interesting lawn specimen.

	Each	Per 10
6 to 8 ft.....	\$1 25	\$10 00

PYRAMIDAL ELM

Ulmus campestris; var. Monumentalis. We offer some unusually fine specimens of this attractive tree. The trunks are straight, the tops being of rather a cone shape, and branching about 6 feet from the ground. They are just the thing to give a formal avenue effect on either side of a short garden walk.

	Each
18 to 20 ft., 5 to 6 in.....	\$20 00



A flowering branch of the Japan Pagoda Tree, attractive for its dark green leaves—doubly so when its flowers are in bloom.

Deciduous Shrubs

SUMMER LILAC

Buddleia, or Butterfly Bush, are other names given these shrubs, and the latter name is especially applicable because quantities of these insects are attracted to these shrubs during their season of bloom. A shrub of recent introduction, that is particularly valuable because of its season of bloom, which is during the summer months when few other shrubs are in flower. They are quite rare, and worthy of being included in all shrub collections. Thrive best in open, sunny locations and are hardy as far north as New York City. The tops will sometimes winter-kill, but this is not especially injurious, because the plants will grow more vigorously and flower more freely after the dead tops are trimmed off early in the spring.

Buddleia variabilis; var. Veitchii. The flowers come in terminal spikes and last for quite a long time. They are of a deep lilac color and will prove to be a very ornamental feature of your garden. Each Per 10
Vigorous plants. \$ 75 \$6 00



Deep lilac in color, the flower racemes of *Buddleia variabilis*, or Summer Lilac, will brighten the border during late summer.

var. Vietchii magnifica. The flower spikes of this variety are often 20 inches or more in length. They, too, are of a deep lilac color, perhaps a little more brilliant than the preceding kind. A most interesting and ornamental plant.

	Each	Per 10
Vigorous plants...\$ 75		\$6 00

PINK FLOWERING JAPANESE QUINCE

The **Japanese Quince**, known by many people as "Japonica," is one of the most popular old-fashioned garden shrubs. In this variety we have a plant that grows very much the same, but varies principally in the flowers, which are of a bright pink color. You will certainly enjoy the blooms which come in the spring.

	Each	Per 10
3 to 4 ft.....\$ 75		\$5 50

SWEET PEPPER BUSH

Clethra alnifolia. A sturdy native shrub with dark green lustrous foliage. Thrives in moist places, and is valuable for naturalistic effects. Its principal value is its white flowers which are very fragrant, and scent the atmosphere during the summer evenings.


	Each	Per 10
3 to 4 ft.....\$ 60		\$5 00

CORRESPONDENCE BLANK

To *THE WM. H. MOON CO.*,
Morrisville, Pa.

Gentlemen :

Having received your booklet, "Rare and Unusual Plants," and as I have not received your general catalogue of Moons' Hardy Trees and Plants, I am checking this blank in the manner that denotes my desire to receive a copy.

(Mark cross here if catalogue is desired) : 

Remarks about planting I am interested in :

(Name)

(Address)

ORDER SHEET FOR "MOONS' RARE AND UNUSUAL PLANTS," 1917

OUR TERMS. Cash with order, excepting to persons who satisfy us as to their financial responsibility, and then payment for full amount of invoice must be made within thirty days from date thereof. Persons unknown to us who seek credit will be assured of quicker delivery if they supply financial references when ordering.

PACKING AND SHIPPING. No charge is made for packing or for delivery to the freight depots or express offices from which we ship. Freight and express charges are to be paid by the purchaser. Plain and explicit shipping directions should be given with every order, naming mode and route for forwarding, otherwise we will use our own judgment; but upon delivery to railroad, steamboat or express companies our responsibility ceases.

GUARANTEE AND CLAIMS. Stock is guaranteed true to name and up to grade and quality ordered. After leaving our nurseries in good condition we do not guarantee the life of our stock, excepting for advanced rates and upon prearranged conditions of sale. Claims for shortage, poor arrival of shipments, and others of whatever nature, must be presented within ten days after the arrival of consignment.

.....1917

To THE WM. H. MOON COMPANY, MORRISVILLE, PENNA.

Subject to your terms as given above I desire to order the list of stock specified below, for which enclosed find.....in payment. (If desirous of opening an account, please supply references.)

Purchaser's Name.....

Street Address.....

Town County..... State.....

Shipping Address.....

Freight Station..... County..... State.....

Express Office..... County..... State.....

Route or Mode of Shipment Preferred.....

Do not write letter on this Order Sheet  **NO ORDER FILLED FOR LESS THAN ONE DOLLAR**

5 or more Plants of any one size and variety at the rate per 10

Quantity Wanted.	Name of Variety.	Each.	Per 10.	Amount of Purchase.
.....	Veitch's Silver Fir,	4 to 5 ft.	\$6 50	\$60 00
.....	Cedar of Lebanon,	2 to 2½ ft.	3 50	32 50
.....	False Yew,	2½ to 3 ft.	4 00	35 00
.....	Cupressus lawsoniana, var. Allumi,	3 to 4 ft.	5 00	45 00
.....	Cupressus lawsoniana, var. Veitchii glauca,	3 to 4 ft.	5 00	45 00
.....	Blue Virginia Cedar,	4 to 5 ft.	5 00	45 00
.....	Conical Spruce,	4 to 5 ft.	3 50	32 50

Quantity Wanted.	Name of Variety.	Each.	Per 10.	Amount of Purchase.
	Japanese Spruce, 2 to 2½ ft.	\$3 50	\$32 50	\$
	Japanese Table Pine, 2½ to 3 ft. x 3 to 4 ft.	10 00	85 00	
	Japanese Cypress, 2½ to 3 ft.	4 00	35 00	
	Dwarf Japanese Yew, 1½ to 2 ft.	3 50	30 00	
	American Yew, 1¼ to 1½ ft.	1 50	12 50	
	Reid's Arborvitæ, 5 to 6 ft.	5 00	45 00	
	Sitka Cypress, 4 to 5 ft.	6 00	55 00	
	Thuja "Little Gem," 8 to 12 in. Broad	1 75	13 50	
	Carolina Hemlock, 4 to 5 ft.	8 00	72 50	
	Red Flowering Japanese Azalea, 1 to 1¼ ft. Bushy	2 00	16 00	
	Lavender Flowering Japanese Azalea, 1½ to 2 ft.	3 50	30 00	
	Scotch Heather, 6 to 8 in.	0 50	4 00	
	Bush Arbutus, Vigorous 2-year plants	1 00	8 00	
	Prostrate Cotoneaster, 1½ to 2 ft.	1 15	8 50	
	Small-leaved Cotoneaster, 1¼ to 1½ ft.	0 75	6 00	
	Japanese Euonymus, 1¼ to 1½ ft.	0 75	6 00	
	Variegated Japanese Euonymus, 1½ to 2 ft.	1 50	12 50	
	English Laurel, 1½ to 2 ft.	2 75	25 00	
	Winter Berry, 1¼ to 1½ ft.	2 65	23 00	

DECIDUOUS TREES

	Globe Norway Maple, 6 to 8 ft. stems, 2 to 2½ ft. diam. of hd.	\$4 00	\$35 00	\$
	Pyramidal Birch, 8 to 10 ft.	3 00	27 50	
	Japanese Flowering Dogwood, 4 to 5 ft.	2 75	22 50	
	River's Purple Beech, 5 to 6 ft.	2 25	20 00	
	Fern-leaved Beech, 4 to 5 ft.	2 25	20 00	
	Pink Flowering Hall's Magnolia, 4 to 5 ft.	8 50	70 00	
	Cork Tree, 10 to 12 ft., 1½ to 2 in.	2 00	16 00	
	Boll's Poplar, 12 to 14 ft., 1¾ to 2 in.	2 25	17 50	
	Boll's Poplar, 14 to 16 ft., 2 to 2½ in.	3 50	27 50	
	Parkman's Flowering Crab Apple, 5 to 6 ft.	2 00	16 50	
	Willow-leaved Oak, 8 to 10 ft., 1¼ to 1½ in.	2 75	25 00	
	Swamp White Oak, 6 to 8 ft.	2 00	16 00	
	Swamp White Oak, 8 to 10 ft., 1¼ to 1½ in.	2 50	20 00	

REGEL'S PRIVET

Ligustrum ibota; var. *Regelianum*. This is really not a new plant, but has just recently come into general use as a hedge plant, and as it possesses so many good qualities for this purpose, we have thought it worthy to have a place in this list. Although botanically it belongs to the Privet family, it should not be confused with the more erect half-hardy formal type. It has a graceful drooping nature of growth, and the leaves color up brilliantly in the autumn. There are also ornamental fruits. A shrub that can be depended upon to thrive under rather adverse conditions, and produce an attractive appearance whether used in a shrub border, for foundation planting, or for hedges. More hardy and dependable than the California Privet. Illustrated below.

	Each	Per 10	Per 100
2 to 2½ ft.....	\$ 35	\$2 50	\$20 00
3 to 4 ft.....	60	4 50	32 50

WAX MYRTLE, OR BAYBERRY

Myrica cerifera. One of our native plants which so attractively decorates our northern Atlantic coast line, and is the shrub of Bayberry Candle fame. It has attractive dark green leaves, but its principal value lies in the fact that it thrives near salt water, and grows well in sandy or gravelly soils, where it is difficult to get other shrubs established.

	Each	Per 10
1½ to 2 ft.....	\$ 50	\$4 00



Fragrant flowers of the Sweet Pepper Bush, *Clethra alnifolia*. Described, page 6.

INDIAN CHERRY

Rhamnus caroliniana. This is really not a cherry, although the Indians probably gave it that name because of the similarity of its fruit to the edible fruit of the Cherries. Native throughout our southern states where it develops into a medium-sized tree. Late in the summer it produces quantities of bright red berries which are very attractive and make it a choice ornamental plant.

	Each	Per 10
3 to 4 ft....	\$ 75	\$5 00

DWARF RED FLOWERING SPIREA

Spiraea bumalda; var. *Walluf*. For many years now *Spiraea Anthony Waterer* has been one of the most popular dwarf shrubs. This variety is closely related, and while similar in its nature of growth and

general effect, it has more desirable flowers. They are of a brighter shade of red, and preferable to the more faded out color of *Spiraea Anthony Waterer*. Blooms throughout the summer when few other shrubs are in flower.

	Each	Per 10
1½ to 2 ft.....	\$ 50	\$4 00

DOUGLAS SPIREA

Spiraea douglasii. An upright growing shrub that is valued principally for its flowers. They are of a deep pink color, and are borne in terminal spikes during the month of July. The color harmonizes well with other plants in a border, and it is a plant that would be appreciated if it were more generally used.

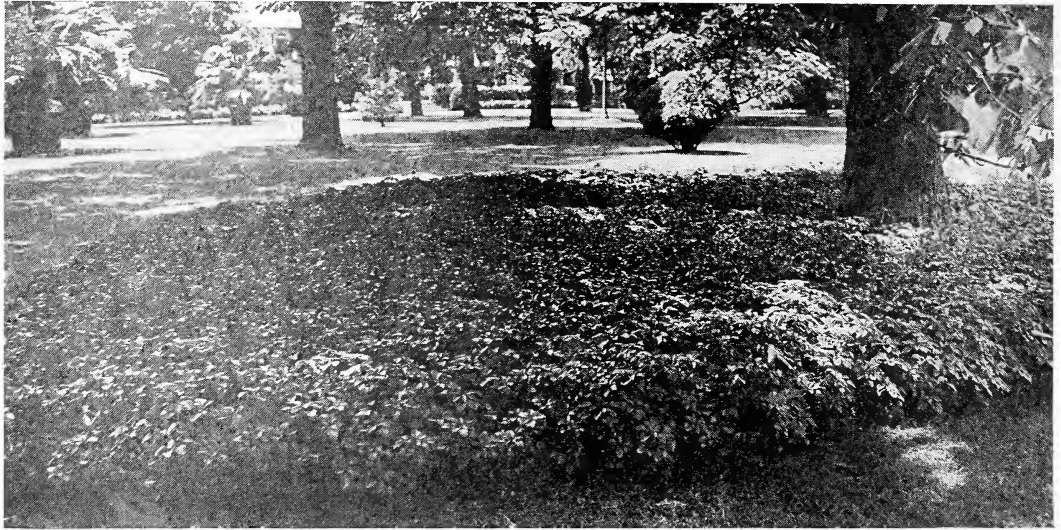
	Each	Per 10
3 to 4 ft.....	\$ 40	\$3 00



Every hedge of Regel's Privet should have this same graceful individuality. It is a satisfactory hedge plant where the California Privet is not hardy. Described above.



M O O N ' S S H R U B S



Always evergreen, *Pachysandra* is the ideal ground cover for shaded places and where the soil is not too impoverished. So planted it will succeed where grass will not. Described below.

A SHRUB WITH INDIVIDUALITY

Tamarix germanica. A shrub with fine, feathery, bluish-green foliage. Late in the summer it produces quantities of beautiful delicate pink flowers. A shrub which does well in alkali soils, also thrives near the seashore, where it is difficult to get many shrubs to grow.

	Each	Per 10
3 to 4 ft.....	\$ 40	\$3 00

DWARF VIBURNUM

Viburnum opulus; var. Nana. This little plant is exceptionally dwarf, seldom growing over eighteen to twenty-four inches high. This makes it suited for use as an edging, and it could be employed for such plantings in northern latitudes where Boxwood is not dependably hardy. There are no flowers of any consequence, but the foliage is of a dark green color that is retained throughout the season, and the plant is not particular about the soil in which it grows.

	Each	Per 10
8 to 12 in.....	\$ 35	\$2 50

ROUND-LEAVED VIBURNUM

Viburnum tomentosum; var. Rotundifolium. This shrub is one of the single flowering Japanese Snowballs, which has white flowers in May or June. The leaves are quite broad, nearly round, and of a green color. In the fall when the leaves take on their autumnal coloring there is a mingling of green, scarlet, and crimson, that makes this one of the prettiest shrubs at that season. Develops into a fairly large specimen of good proportions.

	Each	Per 10
2 to 3 ft.....	\$ 75	\$6 00

WRIGHT'S VIBURNUM

Viburnum wrightii. The number of shrubs with ornamental red fruits is small, so this makes a welcome addition. In May and June there are single white flowers, which later produce large clusters of berries that are of a brilliant red color during the month of September. A handsome shrub for individual or group planting.

	Each	Per 10
3 to 4 ft.....	\$1 00	\$7 50

NEW BOSTON IVY

Ampelopsis veitchii; var. Lowii. The Boston Ivy is the vine that clings so tenaciously, and whose leaves turn a brilliant red in autumn. This new variety has the same good qualities, and differs principally in the size and shape of the leaves. They are much smaller and more deeply and delicately cut. A vine of distinctive character that produces a delicate tracery on stone or brickwork.

	Each	Per 10
Potted plants, 4-in. pots.....	\$ 60	\$5 00

JAPANESE SPURGE

Pachysandra terminalis. An evergreen ground cover that fills a long-felt need for something to decorate shady spots, where it is difficult to get grass to grow. This little plant grows about six to eight inches high, and has rich, glossy green foliage that is very ornamental. It grows rather slowly; but if planted reasonably close together, they will, in a few years, completely cover the ground and will help in making all parts of your lawn attractive.

	Per 10	Per 100
Potted plants, 3-in. pots.....	\$1 50	\$12 00